

RMYC Toronto
Endeavour Marine 30 Mile Classic - 17th November, 2018
SAILING INSTRUCTIONS

1 RULES

- 1.1 The regatta will be governed by the "rules" as defined in the 2017 – 2020 **World Sailing Racing Rules of Sailing (RRS)** and Australian Sailing Special Regulations Part 1 Category 7 except as any of these are altered by the Notice of Race or sailing instructions.

Safety Equipment Compliance Category 7 (R.R.S.) is applicable to all yachts in all divisions.

2 ENTRIES

- 2.1 Eligible monohull boats may be entered by completing the official entry form and lodging it with the Office of the RMYCT or at the Bar by the C.O.B. Wednesday 15th of November

Entries must be accompanied by the entry fee of \$30.00.

Late entries will be accepted up until 1700hrs on Friday 17th of October accompanied by the entry fee of \$30 plus an additional late entry fee of \$15.

- 2.2 Entrants intending to sail non spinnaker in a spinnaker division are advised to check with their insurer that their cover extends to this form of racing.

3 ELIGIBILITY

- 3.1 In accordance with the Notice of Race and the following:-

- a) A yacht must be in possession of a current Safety Equipment Compliance Certificate/ Category 7 (R.R.S.).
- b) A yacht must have proof of appropriate insurance coverage and have submitted an entry form accompanied by the applicable entry fee.

Note: Spot audits may be conducted prior to or after the scheduled race.

4 NOTICES TO COMPETITORS

- 4.1 Notices to competitors will be posted on the official notice board(s) located in the RMYC club bar.

5 CHANGES TO SAILING INSTRUCTIONS

- 5.1 Any change to the sailing instructions will be posted before 0800 hrs on the day it will take effect, except that any change to the schedule of the race will be posted by 1500 hrs on the day before it will take effect.

6 SIGNALS MADE ASHORE

- 6.1 Signals made ashore will be displayed on the marina Flag Mast of the RMYCT.

- 6.2 Flag AP with one sound signal means 'The race is postponed. Yachts need not leave the shore before receiving further instructions'.

- 6.3 Flag L with one long sound signal means 'There is a new Notice on the Notice Board'.

7 SIGNALS MADE AFLOAT

- 7.1 Changes to the Sailing Instructions made afloat will be indicated by the display of Code Flag "L" from the signal mast of the RCV accompanied by two sound signals. The change will be communicated by radio on VHF radio Channel 73.

8 SCHEDULE OF RACE

- 8.1 The starting signals will be as follows:-
Divisions 1 & 2 **1000 hours.**

9 RACING AREA

- 9.1 The racing area will be as shown in Attachment A.

10 THE COURSE

- 10.1 The courses are as indicated in Attachment B. Courses for Divisions 1 & 2 are approximately 27 - 29nm (As the crow flies).

- 10.2 All navigation marks encountered during the race shall be taken on the hand indicated by such mark.

- 10.3 Shortened Course will be indicated by the RCV stationed near a mark of the course displaying code flag S and making two sound signals as the leading yacht approaches. Yachts will then finish between the nearby mark and the RCV from the direction of the previous mark. Pulbah Island, Wangi Point, Coal Point and Boughton Point are considered as "marks of the course" for the purpose of shortening the course. These marks are indicated on the attached course map.

11 MARKS

- 11.1 Figtree, Toronto, Mayo, Belmont, Green, Croudace Bay, Carey & Hartley marks (RMYCT Permanent Marks), will be yellow cylinders, approx 250mm diameter x 1.4 m tall, with a **white cone** atop.

- 11.2 The RMYCT Club mark will be a yellow cylinder approx 250mm diameter x 1.4m tall, with a **red cone** atop.

- 11.3 LMYC, Mark's Point, Anderson's, Channel, Fishing Point & Coon Is. marks (LMYC Permanent Marks) will be Lime Green cylinders 1300high and 250mm diameter with a yellow cap atop and a Red band 400mm down from the top and bearing the letters LMYC.

- 11.4 Where a mark has a required side and may be passed it need not be rounded or looped. Refer RRS 28.1.

12 COMMITTEE VESSEL

- 12.1 The RCV will fly the pennant of the RMYC Toronto.

13 DIVISIONS

- 13.1 The race will be conducted in **two** divisions.

Div. 1 - White (Spinnaker & Non-spinnaker).

Div. 2 - Green (Spinnaker & Non-spinnaker).

Both Divisions will be based on Arbitrary TCF Handicaps. Yachts that nominate as NON SPINNAKER will be handicapped accordingly.

- 13.2 All boats **shall clearly display the appropriate colour divisional flag** from their backstay or nearest appendage.

RMYC Toronto

Endeavour Marine 30 Mile Classic - 17th November, 2018

SAILING INSTRUCTIONS

14 STARTING

14.1 The course flag will be displayed **no later than the Warning Signal.**

14.2 Divisions 1 & 2 (White & Green)

WARNING SIGNAL **0955 hours**
5 Minutes prior to start. Division Flags raised.
 (1 Sound Signal).

PREPARATORY **0956 hours**
4 Minutes prior to start. Code Flag "I" raised.
 (1 Sound Signal).

1 Minute prior to start Code Flag "I" lowered
 (1 long sound signal)

START

Division Flag lowered.
 (1 Sound Signal).

14.3 The starting line will be between the **signal mast** on the race committee boat at the starboard end and a mark with a red flag at the port end. Yachts shall start by crossing this line in the direction of the 1st mark. A green Inner Distance Mark (IDM) may be laid at the starboard end.

When an IDM has been laid a boat shall leave the IDM on the same hand as the RCV when starting or finishing.

During the minute prior to a yacht's starting signal a yacht **shall not** pass between the IDM and the race committee boat from the course side of the start line. Offending yachts will be disqualified without a hearing (Amends RRS 63.1)

14.4 No yacht shall cross the starting line from the direction of the 1st mark of the course after its warning signal.
 (Amends RRS 29.1).

15 RECALLS

15.1 Individual Recalls shall be in accordance with RRS Rule 29.1. An Individual Recall will be signalled by Code Flag X and one sound signal. Code Flag X will be flown until all offending yachts are wholly on the pre start side of the start line or its extensions, or for 4 minutes after the start signal, or one minute before any later starting signal, whichever is the earlier.

15.2 A yacht recalled shall return to the pre start side of the starting line and its extensions by rounding either end of the starting line before starting. Amends RRS 30.1

15.3 General Recalls shall be in accordance with RRS rule 29.2. A General recall will be signalled by Code Flag FIRST SUBSTITUTE and two sound signals.

15.4 When a General Recall has been signalled, a new WARNING signal will be made one minute after lowering the FIRST SUBSTITUTE and one sound signal. The starts for any succeeding divisions shall follow the new start.

15.5 After one general recall Rule 30.3 will apply without a black flag being displayed. Amends RRS 30.3

16 LIFTING KEELS

16.1 Yachts with lifting keels / centreboards shall not raise or lower their keels / centreboards while racing.

17 THE FINISH

17.1 The finishing line will be between the **RMYC Club mark** and the **committee box** on the club marina, except when shortening course necessitates other arrangements in accordance with 10.3.

17.2 A yacht that has finished and cleared the finishing line shall not thereafter re-cross the finish line in either direction. A boat which does so shall be penalised 2 places without a hearing. (Amends RRS 63.1).

18 TIME LIMIT

18.1 All racing shall cease at 1800 hrs. A yacht not finished by the time limit will be scored as a DNF. (Amends RRS 35).

19 ALTERNATIVE PENALTIES

19.1 The 720 deg' turns penalty as provided in RRS Rule 44.1 and 44.2. "Penalties for breaking rules of part 2" shall apply.

20 PROTESTS

20.1 Protests shall be written on prescribed AS Protest forms available at the race office and lodged with the race committee within 1 hour of the protesting yacht's finishing time.

20.2 Arbitration will be available and will be conducted under RRS 44.3(c) and Appendix T.

20.3 Protests will be determined by a protest committee, which will meet as soon as possible after the race.

20.4 All protesting yachts shall display a red flag. (Amends RRS rule 61.1(a)).

21 HANDICAPS

21.1 Arbitrary TCF handicaps will be used to determine a yacht's finishing place.

21.2 A yacht's elapsed time will be multiplied by its TCF to obtain its corrected time. The yacht with the lowest corrected time will be scored first and so on.

22 RETIREMENT

22.1 It shall be the responsibility of each skipper, on retirement from the race, to notify the race committee of such retirement either by telephone on (0404 206897) or by VHF radio Channel 73.

23 PRIZES

Prizes will be awarded to 1st, 2nd & 3rd place in each division.

24 LIABILITIES

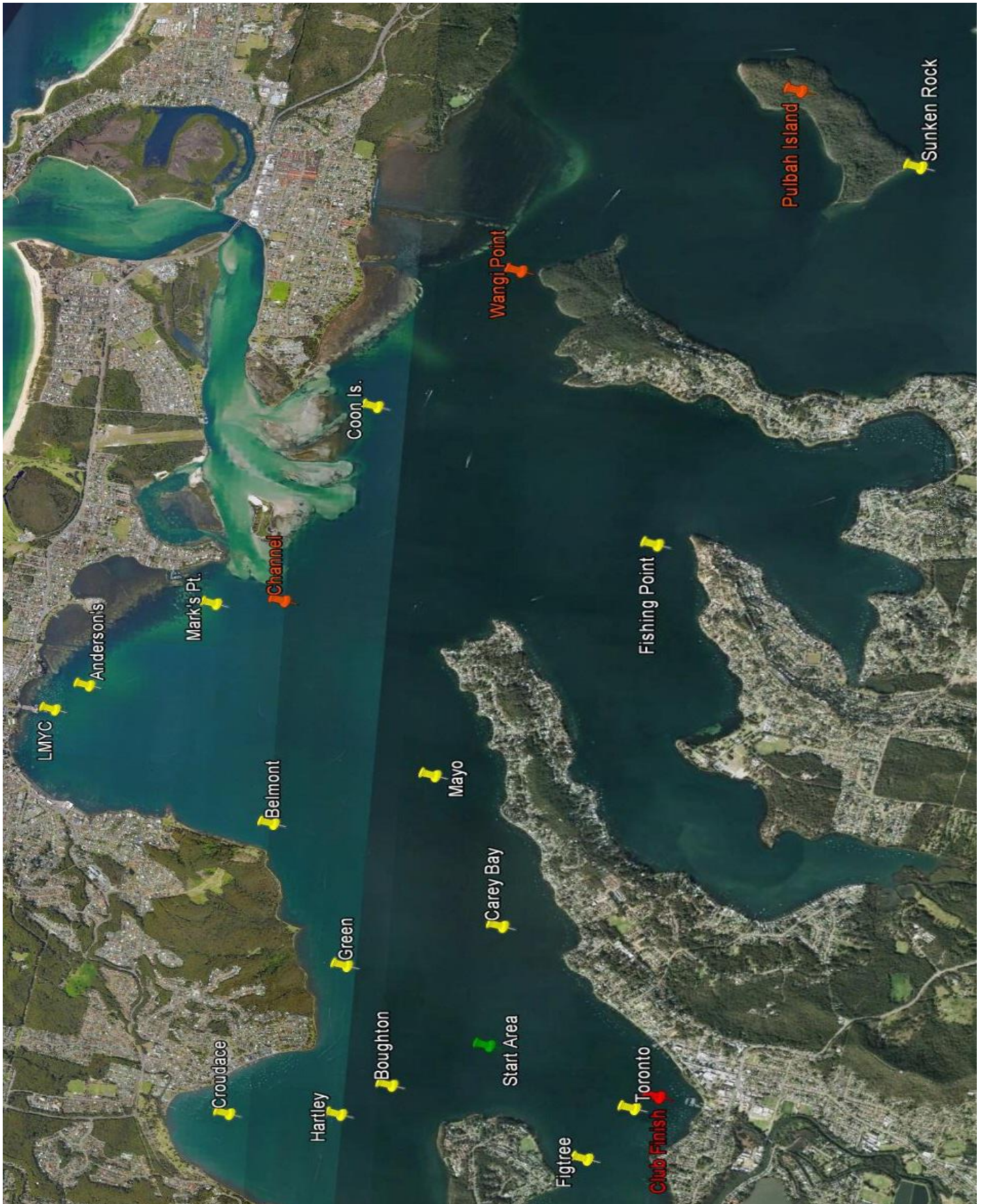
24.1 All those taking part in this regatta shall do so at their own risk and responsibility.

24.2 The RMYC Toronto will not be responsible for the seaworthiness of any vessel whose entry is accepted or for the sufficiency or adequacy of its equipment.

24.3 Attention is drawn to RRS Fundamental Rule 4 which states, "The responsibility for a boat's decision to participate in a race or to continue racing is hers alone".

RMYC Toronto
Endeavour Marine 30 Mile Classic - 17th November, 2018
SAILING INSTRUCTIONS

ATTACHMENT A.



RMYC Toronto
Endeavour Marine 30 Mile Classic - 17th November, 2018
SAILING INSTRUCTIONS

ATTACHMENT B.

DIVISIONS 1 & 2 COURSES			
COURSE 1 (E-NE Approx. 29nm)		COURSE 2 (S-SW Approx. 28.7nm)	
START (Vicinity of Jarrett Street)		START (Vicinity of Boughton Point)	
CROUDACE BAY	S	CAREY	P
CAREY	P	HARTLEY	S
LMYC (LMYC)	S	MAYO	P
CHANNEL (LMYC)	P	BELMONT	S
FISHING POINT (LMYC)	P	WANGI POINT	S
COON ISLAND (LMYC)	S	SUNKEN ROCK	P
WANGI POINT	S	PULBAH	P
PULBAH	S	WANGI POINT	P
SUNKEN ROCK	S	COON ISLAND (LMYC)	P
WANGI POINT	P	GREEN	S
MAYO	S	MARK'S POINT (LMYC)	S
LMYC (LMYC)	P	MAYO	S
CAREY	S	HARTLEY	P
GREEN	P	CAREY	S
FIGTREE	P	FIGTREE	P
CLUB (FINISH)	P	CLUB (FINISH)	P
COURSE 3 (SE Approx. 28.6nm)		COURSE 4 (NW Approx. 27.3nm)	
START (Vicinity of Club)		START (Vicinity of Princes Bay)	
LMYC (LMYC)	S	TORONTO	S
ANDERSON'S	S	FIGTREE	S
CAREY	P	ANDERSON'S (LMYC)	S
MARK'S POINT (LMYC)	S	MARK'S POINT (LMYC)	S
CHANNEL (LMYC)	P	MAYO	P
FISHING POINT (LMYC)	P	COON ISLAND (LMYC)	S
WANGI POINT	S	WANGI POINT	S
SUNKEN ROCK	P	PULBAH	S
PULBAH	P	SUNKEN ROCK	S
WANGI POINT	P	WANGI POINT	P
COON ISLAND (LMYC)	P	FISHING POINT (LMYC)	S
CAREY	S	ANDERSON'S (LMYC)	P
MARK'S POINT (LMYC)	P	CAREY	S
FIGTREE	P	BELMONT	P
		FIGTREE	P
CLUB (FINISH)	P	CLUB (FINISH)	P

RMYC Toronto
Endeavour Marine 30 Mile Classic - 17th November, 2018
SAILING INSTRUCTIONS

ATTACHMENT B. (Cont.)

DIVISIONS 1 & 2 COURSES (Cont.)	
COURSE 5 (W Approx. 29.4nm)	
START (Vicinity of Boughton Point)	
TORONTO	P
GREEN	S
CAREY	P
LMYC (LMYC)	S
MAYO	P
MARK'S POINT (LMYC)	S
CHANNEL (LMYC)	P
WANGI POINT	S
PULBAH	S
SUNKEN ROCK	S
WANGI POINT	P
FISHING POINT (LMYC)	S
LMYC (LMYC)	P
CAREY	S
CROUDACE BAY	P
FIGTREE	P
CLUB (FINISH)	P

Note: “CHANNEL” is a passing mark, not a rounding mark. I.e. No yacht shall sail between the channel mark and the drop over. Where a mark has a required side and may be passed it need not be rounded or looped. Refer RRS 28.1.
 WANGI POINT is a land feature.