

# **INSTITUTE OF CHARTERED ACCOUNTS** **SAILING DAY**

**THURSDAY 24<sup>th</sup> March 2022**

## **SAILING INSTRUCTIONS**





### **Rules**

The race will be sailed under the 2021-2024 Racing Rules of Sailing and the Prescriptions and Special Regulations 2021-2024 of Yachting Australia. The Special Regulations of Australian Sailing for Category 7 races shall apply. A yacht shall each carry a current third party insurance cover in the sum of \$10,000,000. Only a yacht complying with these conditions are considered as entrants.

### **Briefing**

Guests and Skippers will meet in the Clubhouse from 1230  
Briefing for Skippers and guests will be at 1300

### **Start Time and Starting Signals**

TIME	FLAG	SIGNAL	MEANING
1355		W ↑	Warning signal
1356		I ↑	4 minute signal Preparatory Flag
1359		I ↓	1 minute signal Preparatory Flag
1400		W ↓	Handicap Start Times Commence

Handicap start times will apply at the start of the race. Each yacht will be allocated a handicap expressed in whole and half minutes. It will be the responsibility of a yacht to start at a time no earlier than her handicap after the start signal.

*Example* A yacht on a handicap of 22 minutes will start no earlier than 22 minutes after the start signal.

### **Start/Finish Line**

The start/finish line will be a line drawn between the Race Committee Box (RCB) on the SW corner of the LMYC marina and a Lime Green buoy with a red band and yellow cap moored approximately 200m to the west. A Lime Green inner distance mark shall be taken on the same hand as the RCB when starting or finishing.

## **Recalls**

If a yacht starts prematurely a long sound signal will be made and the yacht shall return to the prestart side of the start line by passing around the ends of the start line and start again.

Only yachts that start correctly will be recorded a finishing place.

## **Course: Refer to Mark Location Map Appendix ‘A’ of these instructions**

The course to be sailed will be indicated by a numeral pennant displayed from the RCB at the warning signal:-

Numeral Pennant 1		Numeral Pennant 2	
Start LMYC	N-S	Start LMYC	S-N
Channel	P	Albert	P
<b>Pulbah Island</b>	<b>S</b>	Carey Bay	P
Wangi Point H/land	P	<b>Pulbah Island</b>	<b>S</b>
Swansea	P	Wangi Point H/land	P
Fishing Pt	S	Channel	S
Channel	S	Albert	S
Albert	S	Finish LMYC	N-S
Finish LMYC	N-S		

All cardinal marks encountered on the course shall be passed on the prescribed hand.

## **Shortened Course**

If “S” Flag is displayed on the Flag staff at the Race Control Box (before warning signal), Course will be shortened so that “**GALGABBA**” mark (WASC) replaces Pulbah Island and shall be left to PORT (P) when rounding. (Galgabba location is approximately midway between Wangi Point and Pulbah Island.

## **Marks**

All marks to be rounded shall be LMYC permanent marks – a lime green cylinder approximately 1.2 m high x 300mm diameter with a red band and a yellow cone atop. Pulbah Island and Wangi Point are the landforms so named.

If shortened course WASC permanent mark approximately 1.2 m high x 300mm diameter (lime green cylinder with black band)

## **Prizes**

Prizes will be awarded by, and at the discretion of, the Institute of Chartered Accountants

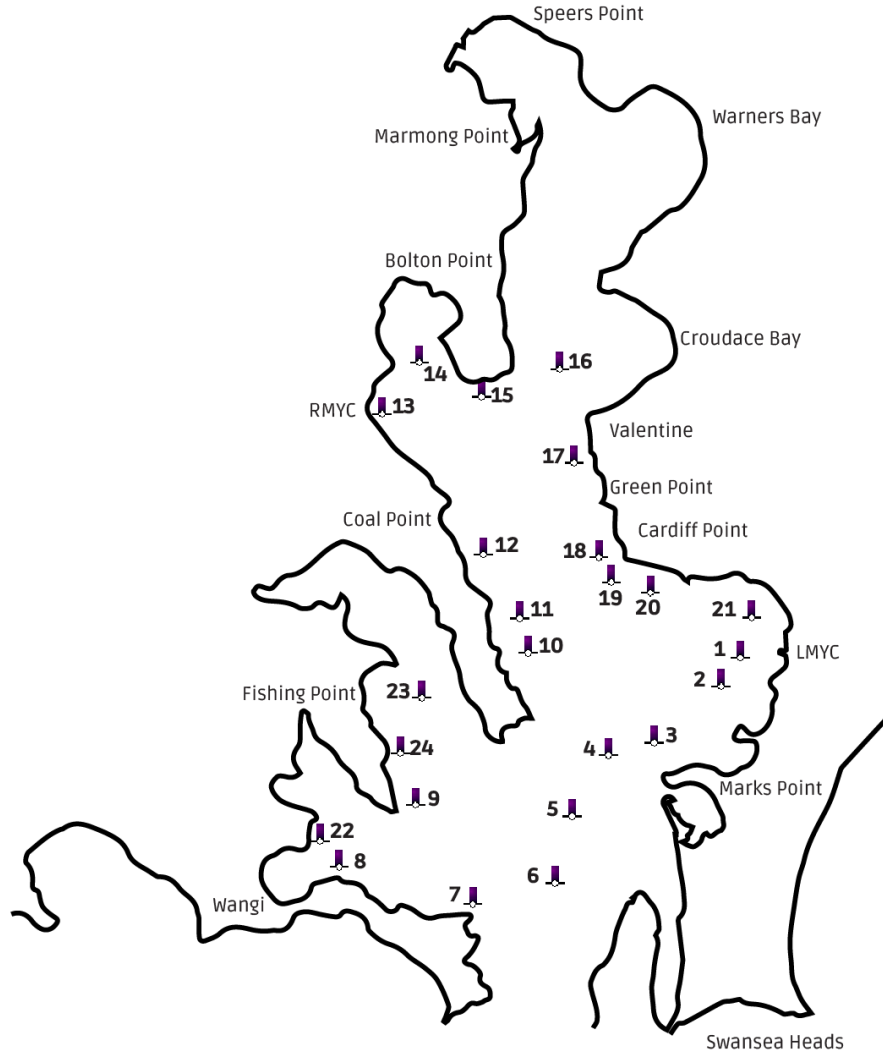
Ross Ahrens  
Sailing administrator on behalf of:

RACE TEAM  
LAKE MACQUARIE YACHT CLUB

# LMYC Mark Location Map

# Appendix A

Note that RMYC marks will not be used in this Regatta



Mark ID	Name	Club	Mark ID	Name	Club
1	LMYC Club	LMYC	13	Toronto	RMYC
2	Andersons	LMYC	14	Figtree	RMYC
3	Marks Point	LMYC	15	Broughton	RMYC
4	Channel	LMYC	16	Hartley	RMYC
5	Pelican	WASC	17	Green Point	RMYC
6	Swansea	LMYC	18	Cardiff Point	LMYC
7	Wangi Point	WASC	19	Belmont	RMYC
8	WASC	WASC	20	Slip	LMYC
9	Fishing Point	LMYC	21	Albert	LMYC
10	Coal Point	LMYC	22	Arcadia	WASC
11	Mayo	RMYC	23	Skye Point	WASC
12	Carey Bay	LMYC	24	Rathmines	WASC
			25	Galgaba	WASC